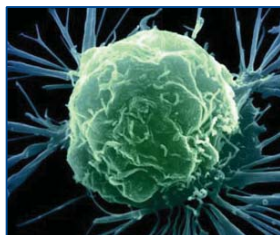


Auditorium • Louis W. Sullivan National Center for Primary Care
Morehouse School of Medicine
720 Westview Drive SW
Atlanta, Georgia 30310-1495



This annual conference honors Henrietta Lacks, an African American woman with cervical cancer, who in 1951 unknowingly donated her cancer cell when a young resident saved some cells before treatment. Henrietta Lacks died a few months later but the first immortal human cell line was developed from her saved cells (named HeLa). Use of the HeLa cells has lead to important advances in in-vitro fertilization, cloning, gene and stem cell research.

AGENDA

REGISTRATION & OPENING REMARKS

- 8:30 a.m. – 9:00 a.m. Registration
- 9:00 a.m. – 9:15 a.m. Program Overview, Roland A. Pattillo, M.D., Conference Chairman, Department of Obstetrics and Gynecology, Morehouse School of Medicine
- Welcome, Eve Higginbotham, M.D., Dean and Senior Vice President for Academic Affairs, Morehouse School of Medicine

SCIENTIFIC SESSION I

- 9:15 a.m. – 9:40 a.m. "Endocrinology of Obesity: Implication for Reproductive Health and Cancer Biology," David Mann, Ph.D., Department of Physiology, Morehouse School of Medicine
- 9:40 a.m. – 9:45 a.m. **Questions and Answers**
- 9:45 a.m. – 10:10 a.m. "How BRCA1 dysfunction results in ER-Negative/Positive Breast Cancers," Veena Rao, Ph.D., Co-Director, Cancer Biology Program, Morehouse School of Medicine
- 10:10 a.m. – 10:15 a.m. **Questions and Answers**
- 10:15 a.m. – 10:25 a.m. Break

SCIENTIFIC SESSION II

- 10:25 a.m. – 11:00 a.m. "Breast Cancer and Triple Negative Profiles," Joel A. Okoli, M.D., M.P.H., F.A.C.S., Department of Surgery, Morehouse School of Medicine
- 11:00 a.m. – 11:10 a.m. **Questions and Answers**
- 11:10 a.m. – 11:35 a.m. "Embracing Clinical Trials," Otis Brawley, M.D., Chief Medical Officer, American Cancer Society
- 11:35 a.m. – 11:40 a.m. **Questions and Answers**
- 11:40 a.m. – 1:10 p.m. Luncheon Address
"The Immortal Life of Henrietta Lacks," Rebecca Skloot, Author, Department of English, University of Memphis

SCIENTIFIC SESSION III

- 1:10 p.m. – 1:35 p.m. "Oncofertility," Winston Thompson, Ph.D., Department of Obstetrics and Gynecology, Morehouse School of Medicine
- 1:35 p.m. – 1:40 p.m. **Questions and Answers**
- 1:40 p.m. – 2:15 p.m. "Preventing HPV Related Genital Tumors," Lisa Flowers, M.D., Department of Obstetrics and Gynecology, Emory University School of Medicine
- 2:15 p.m. – 2:25 p.m. **Questions and Answers**
- 2:25 p.m. – 2:35 p.m. Break
- 2:35 p.m. – 3:10 p.m. "Cancer in Pregnancy," Jeffrey Hines, M.D., F.A.C.O.G., Southeastern Gynecologic Oncology, LLC
- 3:10 p.m. – 3:20 p.m. **Questions and Answers**
- 3:20 p.m. – 3:55 p.m. "Coping with Cancer Diagnosis," Hope Ashby, Ph.D., Department of Obstetrics and Gynecology, Morehouse School of Medicine
- 3:55 p.m. – 4:05 p.m. **Questions and Answers**

**** PLEASE NOTE THAT THIS AGENDA IS SUBJECT TO CHANGE ****

CONFERENCE DESCRIPTION

This conference is designed to heighten participants' awareness on a variety of topics relative to "Cancer and Reproductive Health". **TARGET AUDIENCES:** Practicing Obstetrics and Gynecologist physicians, students in training; perinatal health-care delivery personnel; reproductive health and environmental health specialists; social scientists; health policy officials and community reproductive health activists.

EDUCATIONAL OBJECTIVES

At the conclusion of the conference participants should be able to:

- Describe relationships of BRCA1 dysfunctions and Estrogen Receptor status in breast cancer, particularly triple negative status
- Recognize factors associated with acceptance and rejection of patient participation in clinical trials
- Assess outcomes of various cancers in pregnancy and to recognize potential effects in oncofertility.
- Describe preventive measures in HPV related genital tumors and to describe mechanisms of coping with a cancer diagnosis

ACCREDITATION (SEE EARLY REGISTRATION)

The Morehouse School of Medicine is accredited by the Accreditation Council for Continuing Medical Education to sponsor continuing medical education for physicians.

The Morehouse School of Medicine designates this educational activity for a maximum of 7.0 AMA PRA Category I credit (s)TM. Physicians should only claim credit commensurate with the extent to their participation in the activity.

DISCLOSURE STATEMENT

Morehouse School of Medicine (MSM) in accordance with ACCME guidelines requires instructors, planners, managers and other individuals who are in a position to control the content of this activity to disclose any real or apparent conflict of interest they may have as related to the content of this activity. All identified conflicts of interest are thoroughly vetted by MSM for fair balance, scientific objectivity of studies mentioned in the materials or used as the basis for content, and the appropriateness of patient care recommendations. Full disclosure of speaker relationships will be made at this activity.

LOCATION

This conference will be held in the auditorium of the National Center for Primary Care at The Morehouse School of Medicine, 720 Westview Drive SW, Atlanta, Georgia 30310-1495.

DIRECTIONS

From I-75/85 take I-20 West to the first exit (Lee Street/Atlanta University Center). Turn right onto Lee Street. First driveway on the right is the entrance to the MSM Parking Deck. Parking fee is \$5.00 for all day (no in and out permitted).

U.S. Postage
PAID
Permit No. 3832
Atlanta, GA

720 Westview Drive SW
Atlanta, Georgia 30310-1495



REGISTRATION FORM

14th Annual HeLa Women's Health Conference

CANCER and REPRODUCTIVE HEALTH

Friday, September 25, 2009

REGISTRATION DEADLINE
Friday, September 18, 2009

Please PRINT all information below

Name _____

Degree(s) _____

Title/Organization _____

Address _____

City _____

State _____

Zip Code _____

Business Phone _____

E-mail address (required) _____

Visit www.msm.edu to register or to view more information for this educational program.

EARLY REGISTRATION

***CME Credits are available. The CME fee of \$35.00 is waived for registrations received by August 31, 2009 ***

For more information:
Call: 404.616.6634

Fax or mail this form to:
Fax: 404.616.4131
Mail: HELA Conference
Department of Obstetrics and Gynecology
Morehouse School of Medicine
720 Westview Drive SW
Atlanta, Georgia 30310-1495