

2015-2016  
**KEY  
FACTS  
AND  
STATS**

Morehouse School of Medicine  
**At A Glance**

STUDENTS  
**452**

RESIDENTS  
**143**

FACULTY  
**272**

MSM RANKED **#1**  
IN SOCIAL MISSION\*

THE NUMBER ONE MEDICAL SCHOOL IN THE NATION IN FULFILLING ITS SOCIAL MISSION, A ROLE EMPHASIZED AS CRITICAL TO IMPROVING THE COUNTRY'S OVERALL HEALTH CARE.

**\$96**  
MILLION  
TOTAL ENDOWMENT

**\$44.6**  
MILLION  
TOTAL RESEARCH FUNDING

TOTAL NUMBER OF GIFTS  
**1,342**

TOTAL SCHOLARSHIP AWARDS  
**253**

TOTAL FUNDS AWARDED  
**\$2,965,173**

\*Mullan F, Chen C, Petterson S, Kolsky G, Spagnola M. The social mission of medical education: ranking the schools. Annals of Internal Medicine. 2010 Jun 15;152(12):804-11

**DEGREE PROGRAMS\*\***

**DEGREES**  
M.D.  
Ph.D. in Biomedical Sciences  
M.S. in Biomedical Research  
M.S. in Biomedical Technology  
M.S. in Clinical Research  
M.S. in Medical Sciences  
M.S. in Neuroscience  
M.P.H.

**DUAL DEGREE TRACKS**  
M.D. / Ph.D. in Biomedical Sciences  
M.D. / M.S. in Clinical Research  
Ph.D./ M.S. in Clinical Research  
B.S./M.S. in Neuroscience

**RESIDENCY PROGRAMS**

Family Medicine  
Internal Medicine  
Department of Obstetrics and Gynecology  
Community Pediatric Residency  
Psychiatry and Behavioral Sciences  
Public Health and General Preventive Medicine  
Surgery

**MSM RESEARCH CENTERS AND INSTITUTES**

Atlanta Clinical and Translational Science Institute  
Cardiovascular Research Institute  
Center of Excellence in Health Disparities  
Center for Lab Animal Resources  
National Center for Primary Care  
Neuroscience Institute  
Prevention Research Center  
RCMI-Center for Clinical and Translational Research  
Research Centers in Minority Institutions  
Satcher Health Leadership Institute  
Transdisciplinary Collaborative Center

**CORE AREAS OF RESEARCH**

- ▶ Cancer
- ▶ Cardiovascular Diseases
- ▶ HIV/AIDS & Infectious Diseases
- ▶ Neurological Diseases

\*\*MSM awards the Masters degree only. The Bachelor's degree is awarded by the student's participating undergraduate institution.



98%  
M.D. Match



97%  
Placement of M.P.H. Graduates



67%  
Ph.D. grads pursue postdoctoral training in government, academia or industry

69%  
Primary Care & Core Specialties



**VISION** Leading the creation and advancement of health equity

**MISSION**

MSM is dedicated to:

- ▶ Improving the health and well-being of individuals and communities;
- ▶ Increasing the diversity of the health professional and scientific workforce;
- ▶ Addressing primary health care needs through programs in education, research, and service,

with emphasis on people of color and the underserved urban and rural populations in Georgia and the nation.

**VISION IMPERATIVES**

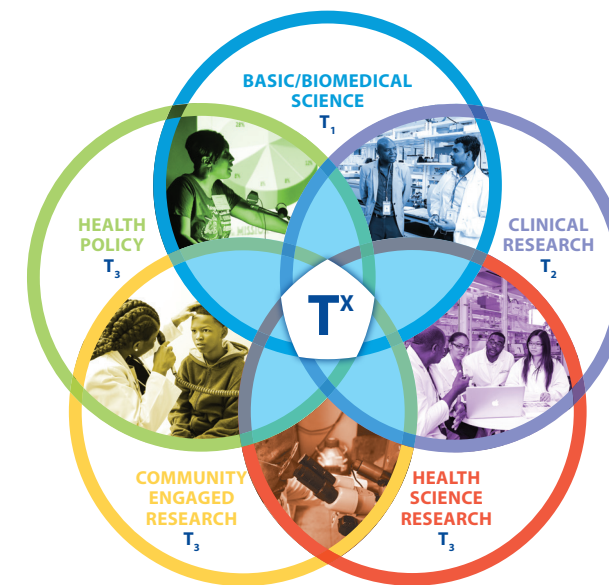
- ▶ Translating Discoveries into Health Equity
- ▶ Building Bridges Between Health Care and Health
- ▶ Preparing Future Health Learners and Leaders

**CORE VALUES**

Our core values guide organizational behavior and shape MSM's future

- ▶ **EXCELLENCE:** Achieving the highest level of performance in all endeavors
- ▶ **SERVICE:** Treating all people and communities with respect, compassion and empathy
- ▶ **KNOWLEDGE:** Sharing our ideas, discoveries, methods and skills to advance health equity
- ▶ **WISDOM:** Valuing the knowledge and experience of all individuals
- ▶ **INTEGRITY:** Upholding the highest standards of ethical behavior, transparency and accountability
- ▶ **INNOVATION:** Creating inspired solutions in science, service and education

**300+**  
COMMUNITIES  
served by MSM initiatives  
and programs



**T<sup>x</sup>**  
THE ULTIMATE  
TRANSLATION  
OF SCIENCE

Coined at Morehouse School of Medicine, T<sup>x</sup>™ symbolizes the exponential effect that implementation science has in communities.  
MSM T<sup>x</sup> represents the infinite stages of translation beyond T1 and T2. In this regard, the outcome of T<sup>x</sup> is health equity, the cornerstone of Morehouse School of Medicine's vision.