

Flow Cytometry & Cell Sorting Lab

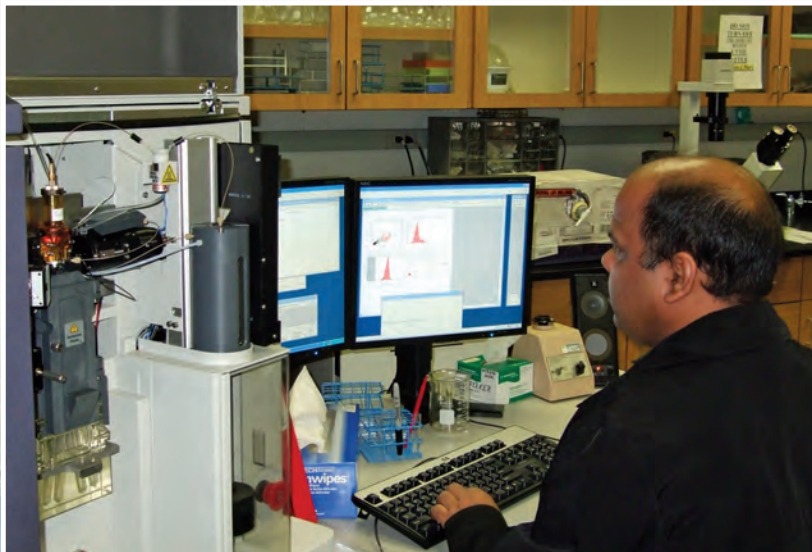
Equipment / Technology:

The flow cytometry, FACS, and magnetic-bead cell-sorting core at Morehouse School of Medicine houses a BD FACS Aria II and Miltenyi Biotec autoMACS Pro Separator. Certified BD- and Miltenyi-trained staff are available for consultation, acquiring data, or sorting cells. The BD FACS Aria is equipped with 488 nm and 633 nm lasers along with filters to simultaneously detect the following fluorophore signatures: Blue A (785/60 nm – e.g., PECy7), Blue B (695/40 nm – e.g., PECy5.5), Blue C (610/20 nm – e.g., PE.TxRd), Blue D (575/26 nm – e.g., PE), Blue E (530/30 nm – e.g., FITC), Red A (780/60 nm – e.g., APC.Cy7), and Red B (660/20 nm – e.g., APC). The autoMACS Pro Separator performs fully automated multisample labeling and separation of various cell types.

Service Charges:

Service charges are as follows:

- \$125/hr, Technical Assistance, Analysis, or Sorting (MSM faculty)
- \$175/hr, Technical Assistance, Analysis, or Sorting (non-MSM faculty)
- \$75/hr, Acquisition only (MSM faculty)
- \$100/hr, Acquisition only (non-MSM faculty)



RCMI
Research Centers in
Minority Institutions
MOREHOUSE SCHOOL OF MEDICINE



Morehouse School of Medicine
Medical Education Building C
Research Core Facility
720 Westview Dr. SW
Atlanta, GA 30310
404.752.1500
www.msm.edu

Contact Information:

Dr. James Lillard
Flow Cytometry & Cell Sorting
Core Leader
jlillard@msm.edu
404.752.1863

Dr. Rajesh Singh
Managing Director
rsingh@msm.edu
404.756.6661